

UL Goniometer Color Data Report

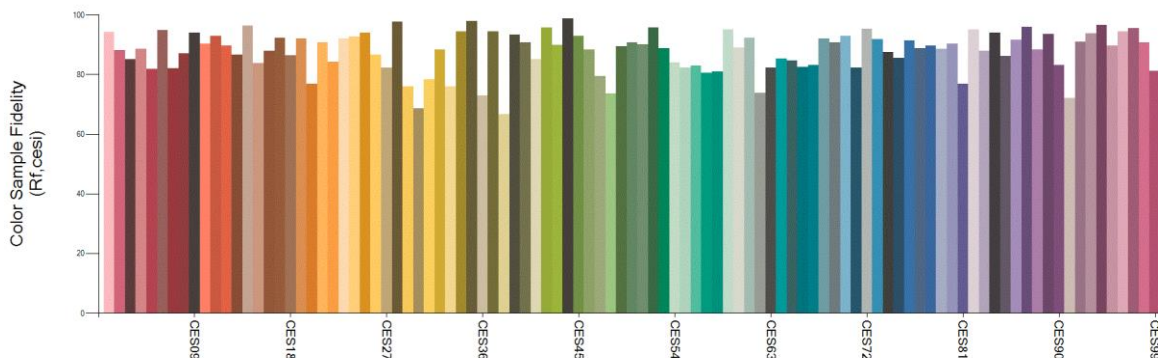
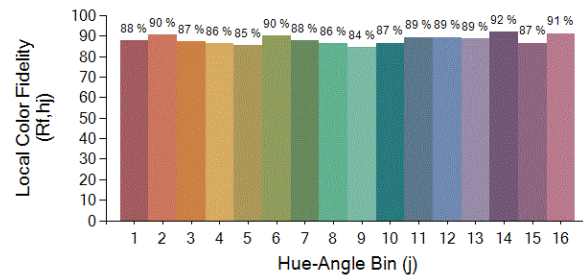
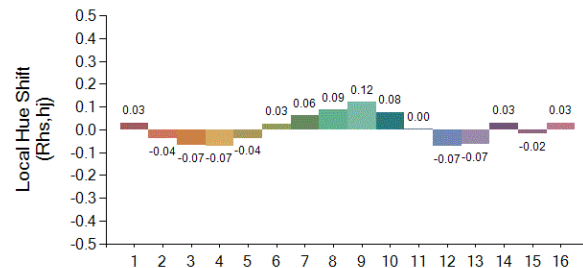
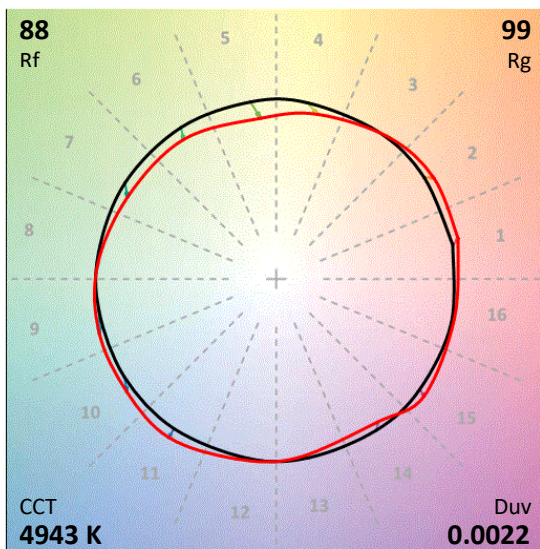
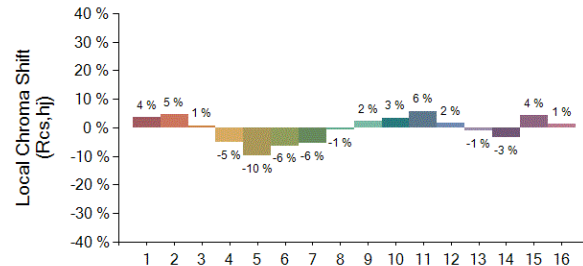
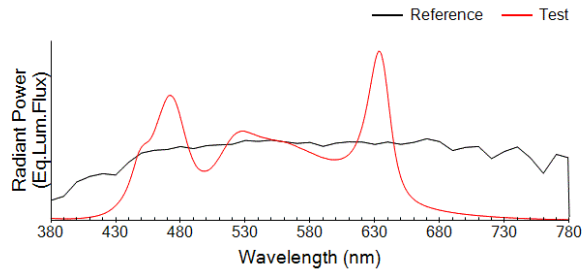


| | |
|-------------------------|------------------------------------|
| Laboratory Name: | Signify Monterrey |
| Address: | Carr. Miguel Aleman km 15.5 |
| | La Encarnacion, 66640 |
| City: | Apodaca |
| State/Province | Nuevo Leon |
| Country: | Mexico |

ANSI/IES TM-30-18 Color Rendition Report

Source: C4L15CKMDMXU/C4RDLCL
Date: 28/01/2021 08:37

Manufacturer: Lightolier by Signify
Model: C4L15CKMDMXU/C4RDLCL



Note: This is the recommended method for displaying IES TM-30-18 information

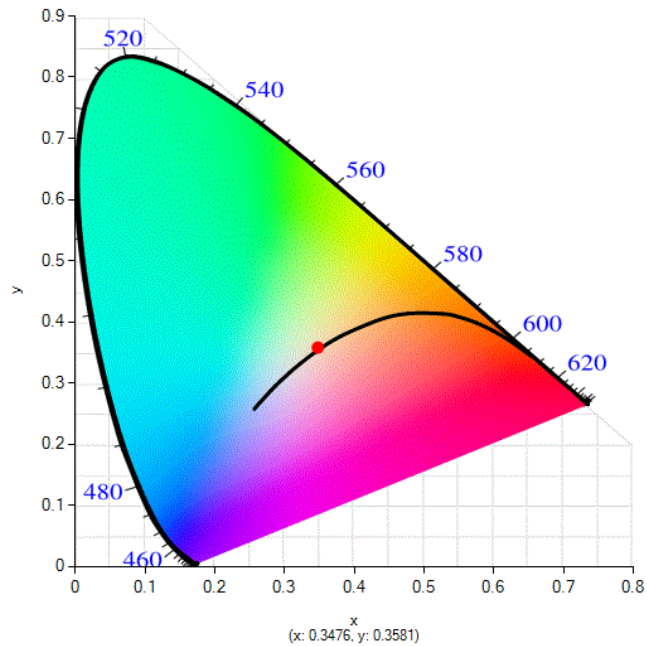
Colors are for visual orientation purposes only
 Created by UL TM-30-18 Processing application

x **0.3476**
 y **0.3581**
 u' **0.2106**
 v' **0.4881**

| CIE13.3-1995 (CRI) | |
|-----------------------|-------------|
| Ra | 89.7 |
| R15 | 89.6 |

Test Information

| Volts | Amps | Watts | Hz | PF | THDV | THDA |
|--------|---------|--------|-------|---------|-------|--------|
| 120.01 | 0.20646 | 22.257 | 60.00 | 0.89780 | 0.180 | 28.330 |



CIE 1931 2D Plot

| Color Rendering Index | | | | | | | | | | | | | | | |
|-----------------------|------|------|------|------|------|------|------|------|------|------|------|------|------|------|------|
| Ra | R1 | R2 | R3 | R4 | R5 | R6 | R7 | R8 | R9 | R10 | R11 | R12 | R13 | R14 | R15 |
| 89.7 | 87.2 | 91.5 | 97.5 | 90.1 | 90.1 | 91.5 | 90.1 | 79.8 | 50.5 | 91.4 | 95.9 | 77.2 | 58.6 | 64.2 | 89.6 |

